



**Connections  
made of steel.**

# WE are **WASI**



Because **every item counts – no matter how small.**

For over 60 years, WASI has been a team player, solution finder, idea generator, trailblazer and pioneer. Every one of our employees gives their best every day, making it possible for everything to run smoothly – from initial contact to delivery. We develop custom solutions for increasingly special requirements.



**All of WASI – in 44 seconds.**



Scan the QR code and watch the video directly on your smartphone.





# Who are WE?



Wholesaler of **stainless steel fasteners** for your projects since 1961:

- more than 21,000 different items
- customer base around the world
- 450 suppliers in 25 countries
- average 85 tons of outgoing goods every day
- 170 employees
- we speak more than 15 languages



**DIN &  
standard parts**



**Special, drawing  
parts & installation  
technology**



**Maritime**



**Solar**



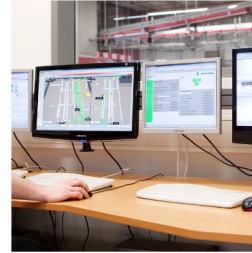
## Ordering system/Kanban

In addition to WASI products, you can also manage any products from other divisions with our shelf management system.



## WASI-APP

Order anytime, anywhere. All product information always available. Track orders from entry to delivery. Scan and order the product on the shelf and contact the salesperson directly.



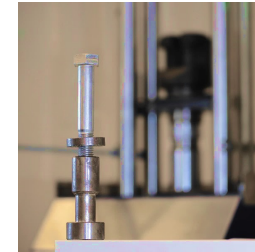
## EDI

Automate the process from order to invoice through EDI connection.



## Webshop

Order more than 21,000 products 24/7.



## WASI quality promise

In-house laboratory with modern testing equipment.

Whether you wish to check the quality of your ordered drawing part or create certificates based on your own measured values. WASI cares about the quality of all products.

# Logistics – facts and figures



**11,000**

sqm covered  
storage area

**35,000**

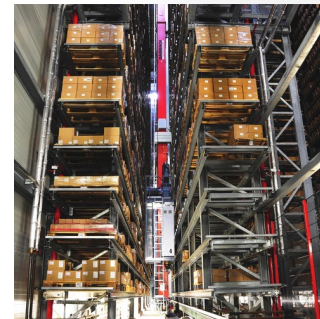
container bays  
operated via a shuttle  
system

**16,500**

storage spaces  
for pallets

**200,000**

total container  
bays





## **Customized packaging & labeling**

More than 1 million packaging units pre-assembled according to individual customer specifications.



## **Drop shipping**

Ship our product range in your own package design directly to your customers. We already process 250 orders a day.



## **Kanban system**

Simple, scanner-based ordering system, material supply to production according to your needs and shelf management at your production sites.



# Standard parts

Fasteners made of stainless steel from A1 to A5 in all strength classes,  
from duplex 1.4462 and from various special materials.

**According to DIN, EN or ISO as well as all common international and WASI's standards**



**Screws**



**Nuts**



**Washers**



**Locking elements**



**Pins**



**Rivet technology**



**Fittings**



**Anchors**

# Special and **drawing parts**

Special fasteners as well as custom drawing parts made of different materials, turned, pressed, stamped and much more.

Special surface treatments for a wide range of applications.

This product line also includes height adjustment elements and adjustable feet. Machines, systems, gearboxes, devices and appliances in wide range of applications are given their secure footing by WASI installation technology.

Choosing the right material for your application

Choose the optimal manufacturing process and the right coating

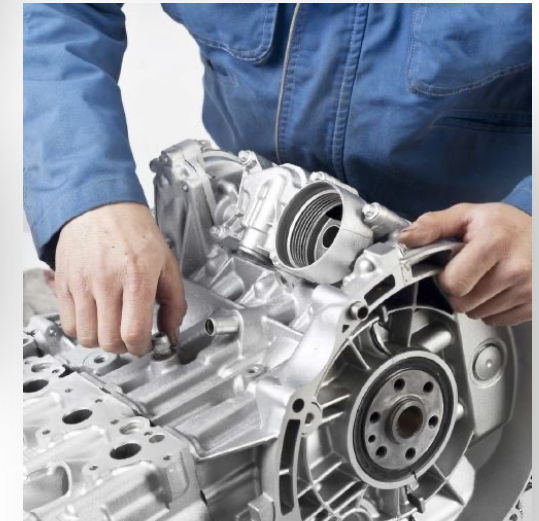
Extensive quality management



**Installation technology**

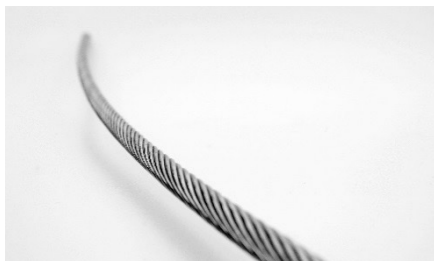


**Coated fasteners**





Premium stainless steel products used primarily in water sports.



**Wire ropes**



**Chains**



**Boat accessories**



**WASI anchor gear (GTS)**



**Metal fittings**



**Hinges**

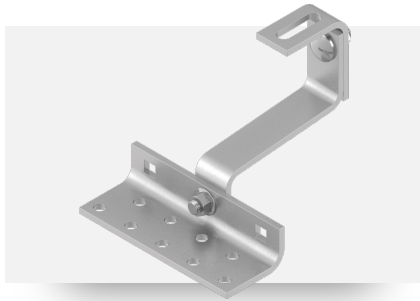


**Bolts, hooks &  
locking elements**



**Pipe accessories**

**Stainless steel and aluminum mounting solutions for all common roof structures.**



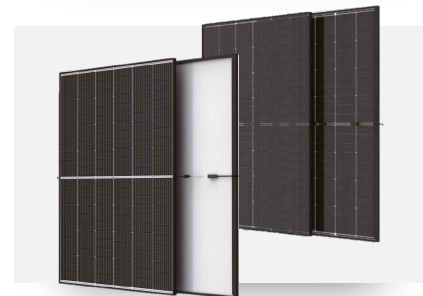
**Roof fastening**



**Screws, accessories  
& much more**



**Profile  
technology**



**Various  
solar modules**

Scan the QR code and get more  
information about **WASI | SOLAR**.





#### CONTACT

***Get in  
touch.***

**Address** WASI-Str. 1, 42287 Wuppertal

**E-Mail** [info@wasi.de](mailto:info@wasi.de)

**Website** [www.wasi.de](http://www.wasi.de)

**Phone** +49 (0) 202 2632 - 0

**Fax** +49 (0) 202 2632 - 407