

WASI



→ Solar mounting system „Pro+ LI0 East-West“

**Quickly.
Simple.
Great.**



”

3 - 4 minutes assembly time per module - installation has never been so easy. The system is intuitive, convenient and functional.

Projects can now be implemented quickly and efficiently – with the „Pro+ L10 East-West“ solar mounting system.

Flat roof solar mounting system “Pro+ LI0 East-West”

7 components,
2 hands, 1 screwdriver,
3 - 4 minutes, done



Pro+ LI0 East-West

- Transverse mounting
- Angle of inclination 10°
- South dimension: 1.500 mm (1.300*, 1.400* or 1.600*)
- East-west pitch: 2.500 mm (2.150*)

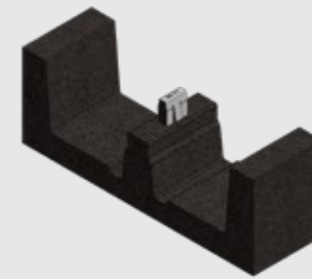
* For projects of > 500 kWp a deviating sample size is possible.



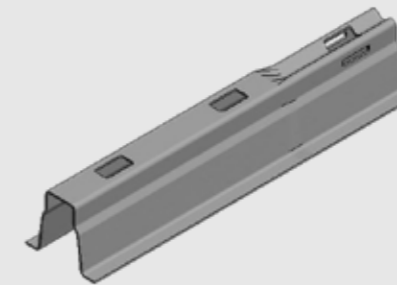
“The Pro+ LI0 mounting system convinces with absolute easy handling.”

The advantages:

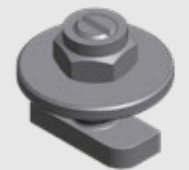
- Uncomplicated assembly, simple and logical
- Assembly time 3 - 4 minutes per module
- Low number of components
- Durable and safe construction
- Connectors made of metal (no plastic), thus already designed for grounding and lightning protection
- Can be used up to a height of 25 m as standard (higher on request)
- Low ballast, based on Eurocodes and wind tunnel tests (especially tested for PVC roofs)
- Also suitable for solar modules up to 2 meters and (especially wide and/or long) high power modules
- Flexible soft rubber feet for compensation of thermal expansion and to protect the roof



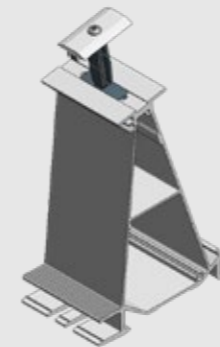
Rubber tile carrier – click system, Item No.: 9669-729622



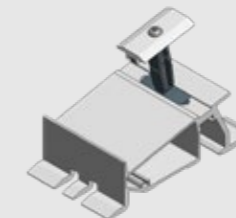
Roof carrier profile – galvanized, Item No.: 9669-741802500



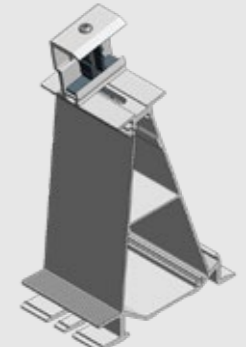
Coupling set, washer, counter nut – Item No.: 9669-774221



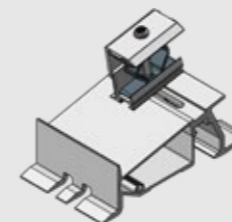
Back foot middle – Item No.: 9669-724650



Front foot middle – Item No.: 9669-724660



Back foot side – Item No.: 9669-724651



Front foot side – Item No.: 9669-724661



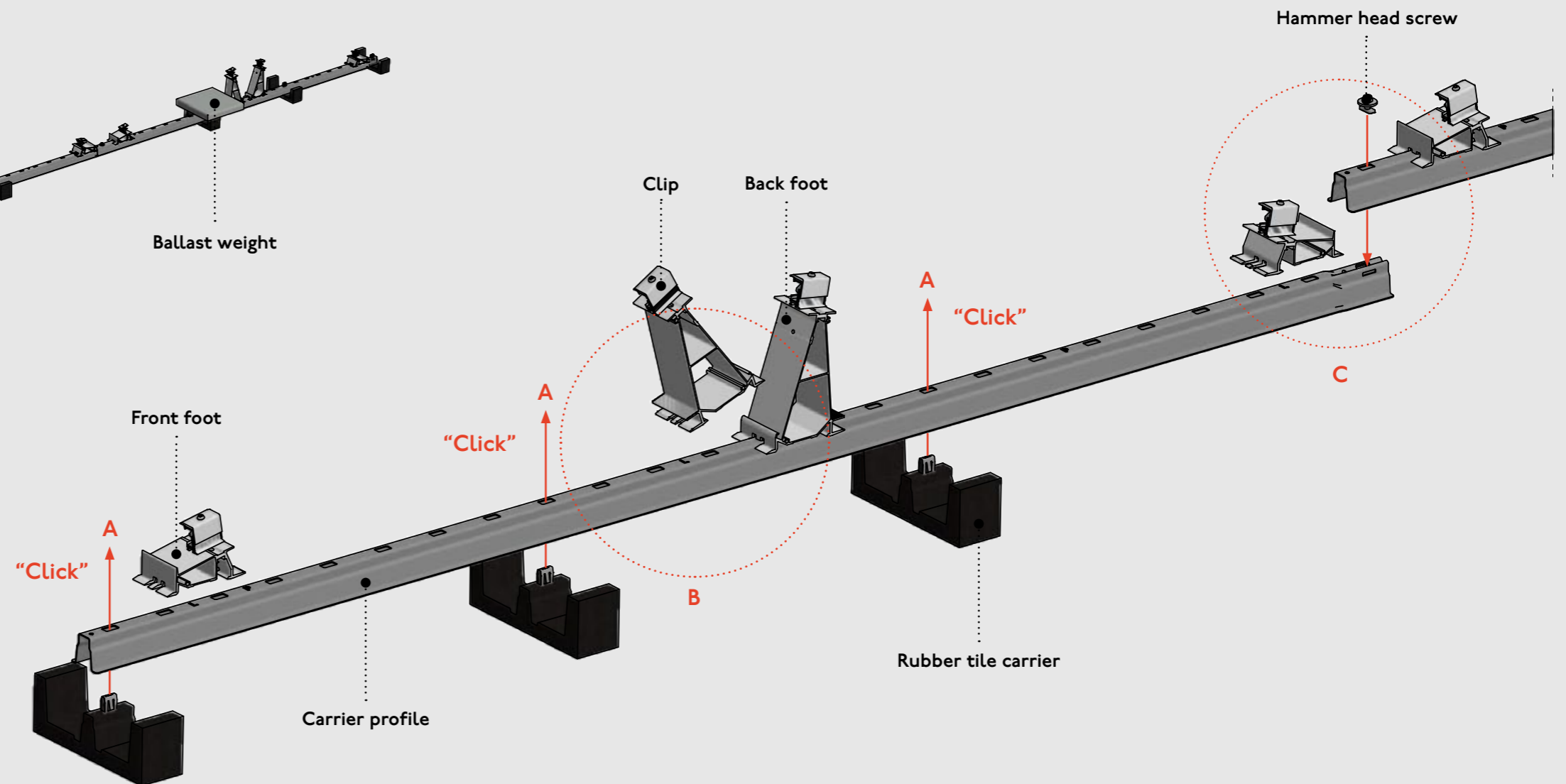
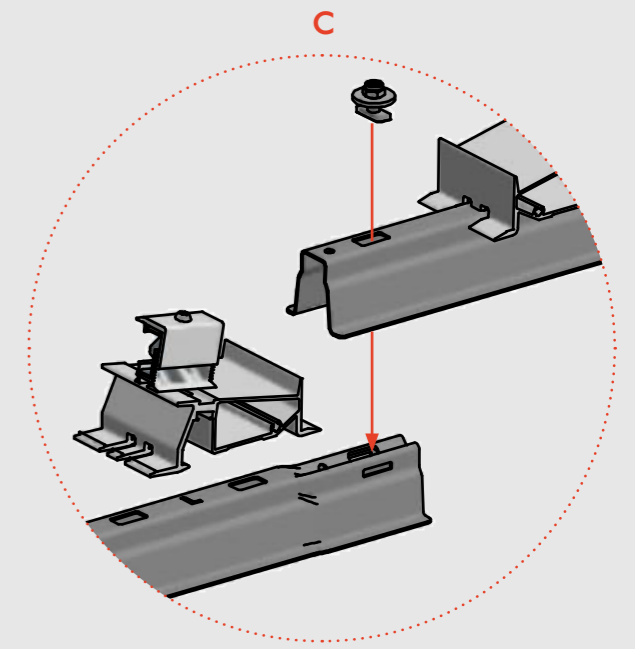
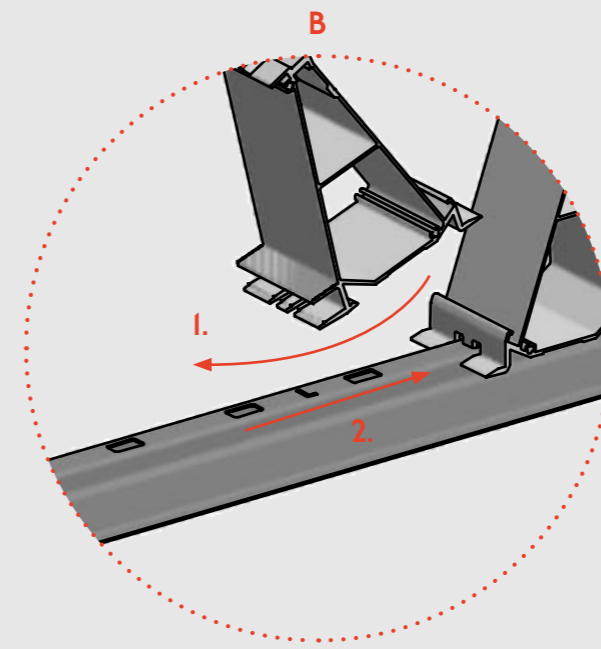
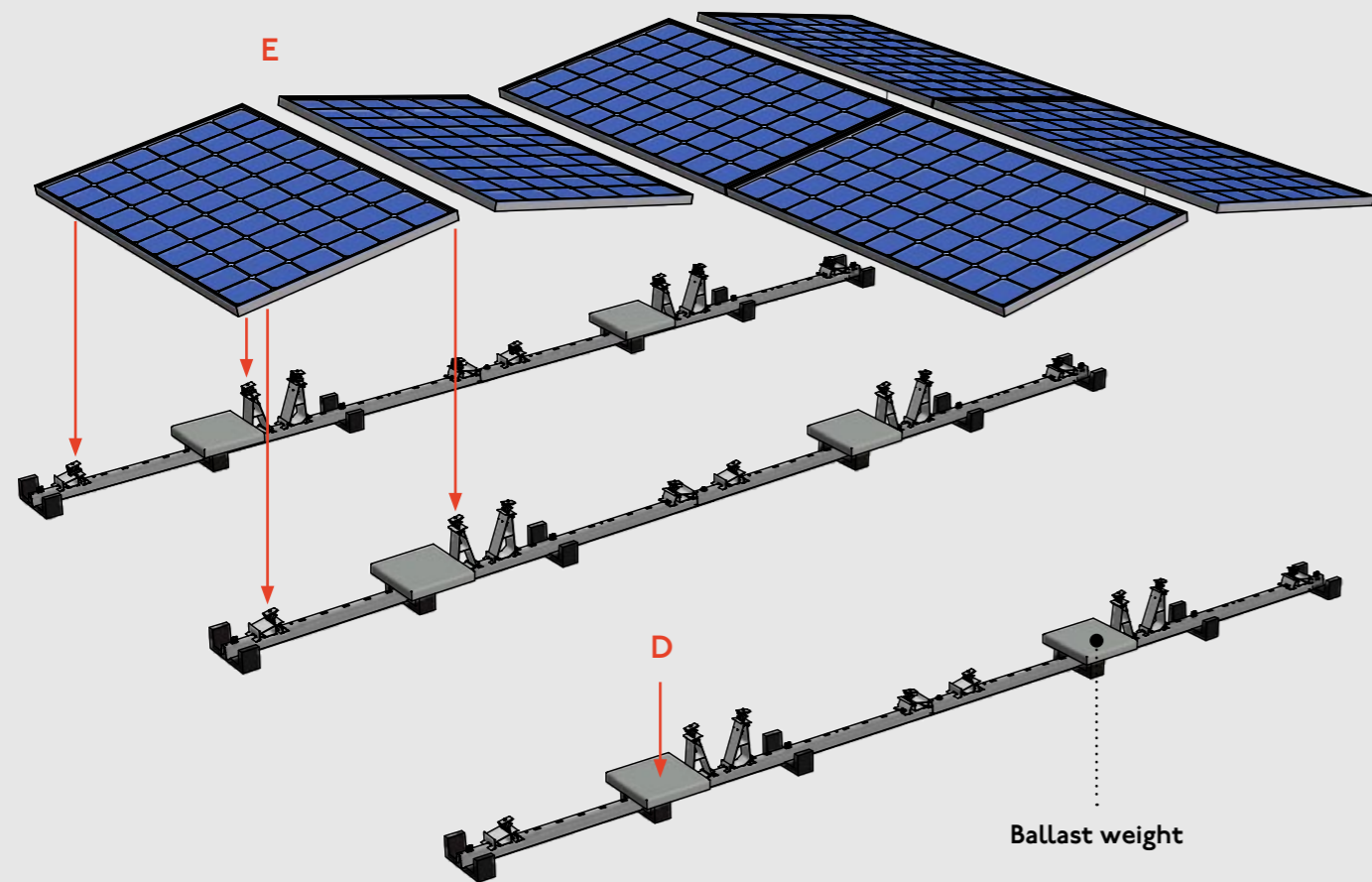
Conveniently configured.
Maximum efficiency.

Fast assembly due to intelligent design.

Durable with high quality and simple components.

Effective and profitable with fast project implementation.

Quick Guide – Assembly



Simple as that:

- A Connect the carrier element and the rubber seal carrier
- B Connect rear and front foot elements with roof carrier profile
- C Insert support elements at connection point and secure with hammerhead screw
- D Apply ballast weights to rubber brick girder
- E Insert solar modules into clamps, secure with integrated screws

**Realize projects faster
and less complicated,
achieve more sales.**



Technical data

Pro+ LI0 East-West

also available as south elevation

The System:

- Mounting system for PV-panels on flat roofs (commercial and domestic)
- For east-west configurations
- Fixed tilt angle of 10° (Landscape or Portrait)
- Low weight, shielded system with wind deflectors

Pro+ compared to other systems in the market:

- Most cost effective solution
- All connections are made of metal, no plastic. This ensures high strength, reliability, makes the system easy to ground and for equalization of potential
- Suitable for roofs higher than 25 mtrs.
- Can simply be placed with ballast flat roofs with a maximum slope up to 5°. The system needs to be fixed to the roof when there is a bigger tilt angle
- Universal integrated panel clamps (for 28-50 mm frame height)
- Suitable to be placed on roofs with gravel, "green roofs" or fixed on steel structures above the roof.
- Elevated mounting on roof for guaranteed drainage


Additional features:

- Designed and calculated according to latest regulations
- Low weight and roof load, minimized wind load thanks to the use of wind deflectors
- Limited number of parts and fasteners for maximum logistical advantages and easy and fast installation
- Smart solutions to hold cables and cable baskets
- Easy to disassemble

Panel formats (mm)

Length min.	Length max.*	Width min	Width max	Pitch
		977	1.070	2.300
1.520	2.320	1.071	1.120	2.400
		1.121	1.200	2.500

* Larger panel sizes are often also possible to mount on Pro+. Please contact the WASI Solar team for possibilities



The system for the change to a sustainable future.

Meet the Team – Great people, with a lot of enthusiasm and lots of expertise in the solar sector

WASI is not simply a company, it consists of many individual great people and personalities. Our solar team works for our customers with enormous passion and special commitment – competent and reliable. Our solar team can draw on a wealth of experience. Sabine Ley, for example, has been working for WASI for almost 40 years. experience, she is available to our customers and colleagues at WASI with plenty of expertise. Or Tobias Rieger, has already installed hundreds of PV systems before he joined WASI. Everyone in the team has a lot of expertise in the field of pv industry. So we know what is important and we understand the needs of our customers.

And we are proud of our cooperation, our fair and cooperative self-image – because we live and breathe fasteners and solar mounting systems. In our opinion, there is nothing better than having fun with your colleagues. Especially for WASI as a wholesaler, the team spirit is crucial. It is what unites WASI employees, the team spirit.



Sabine Ley

sabine.ley@wasi.de

0202 26 32 - 163

Scan & Write



Daniela Hinkel-Ebeling

daniela.hinkel-ebeling@wasi.de

0202 26 32 - 136

Scan & Write

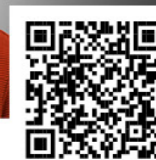
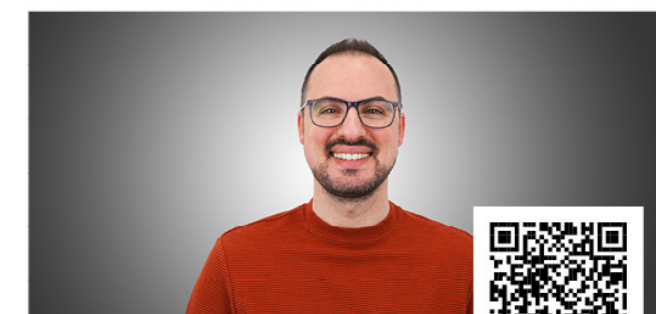


Silvia Aguilera

silvia.aguilera@wasi.de

0202 26 32 - 233

Scan & Write

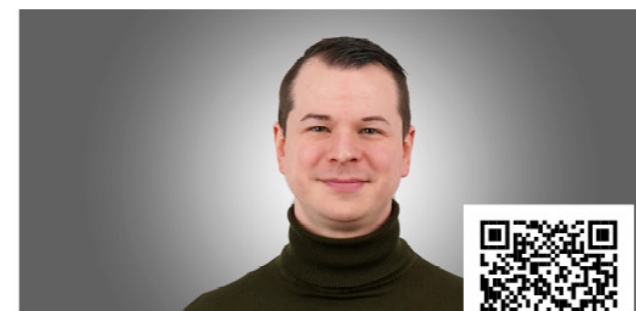


Elia Boccadifuoco

elia.boccadifuoco@wasi.de

0202 26 32 - 178

Scan & Write



Marco Stegmaier

marco.stegmaier@wasi.de

0202 26 32 - 268

Scan & Write

The WASI Solar Team -Experts with many years of experience

WASI GmbH

WASI-Straße 1

D-42287 Wuppertal

T +49(0)202 / 26 32 - 2 33

F +49(0)202 / 26 32 - 4 07

E solar@wasi.de

www.wasi.de/en

Follow us on social media channels to learn more about WASI
about: News, People, Stories, etc.

